

Leadership Fellows Program



INFORMATION SESSION

THURSDAY OCTOBER 29, 2009
THURSDAY NOVEMBER 5, 2009



Agenda



- Mission
- Roles
- Benefits
- Process
- Q/A

Leadership Fellows Program

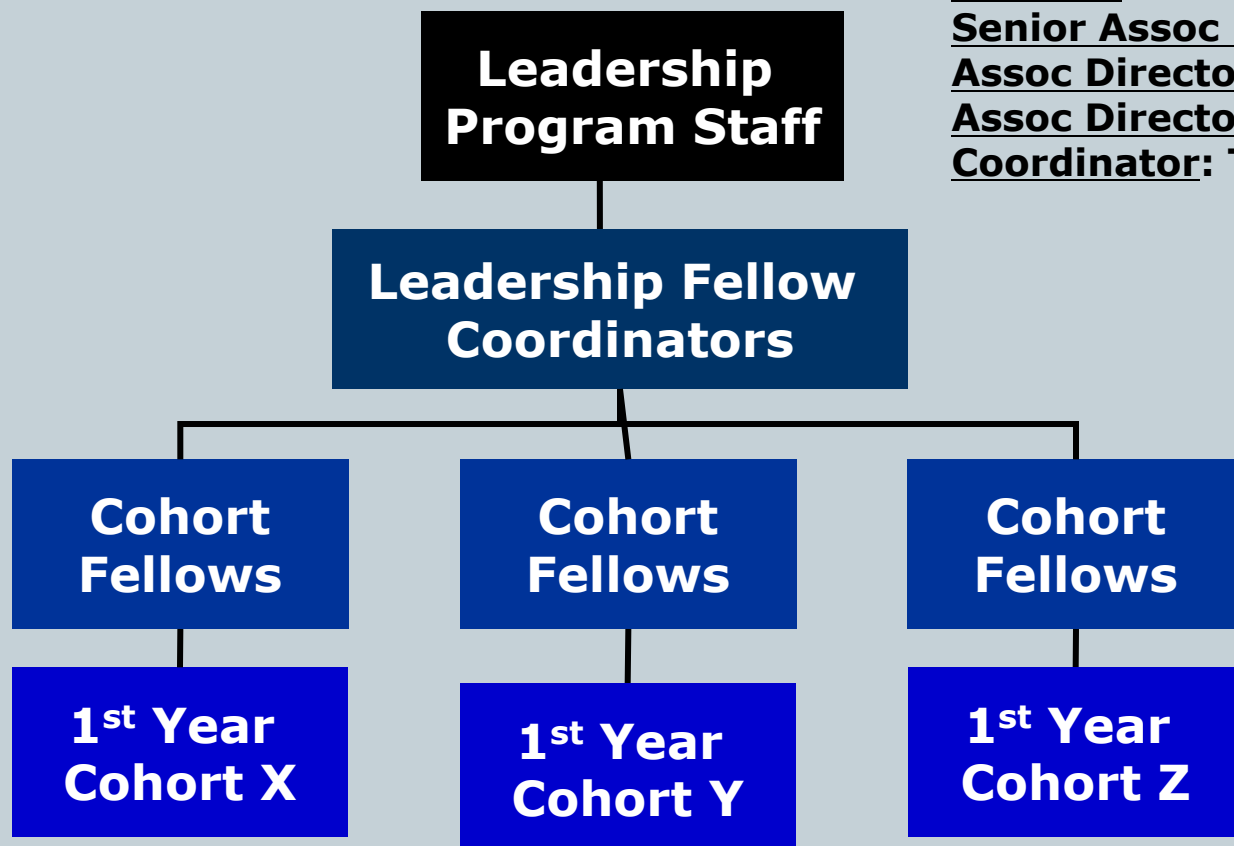
Mission Statement

Leadership Fellows are charged to provide every first year student the opportunity to enhance their leadership potential through the development of practical tools and concrete strategies applicable in every area of their lives.

Program Structure



Director: Jeff Klein
Senior Assoc Director: Lynn Krage
Assoc Director: Preston Cline
Assoc Director: Katie Krimmel
Coordinator: Tess Punia



Wharton Leadership
UNIVERSITY of PENNSYLVANIA

Program

Core Competencies



Leadership Character

Effective
Communication

Team Development

Coaching

Diplomacy

Emotional Intelligence



Wharton Leadership
UNIVERSITY of PENNSYLVANIA
Program

Program Timeline



- Fridays and Weekends Spring 2010: Training
- Summer 2010: Contact with Program, Outreach to incoming class
- August 2010: Learning Team Retreat, MGMT652 Sim
- Q1: MGMT652 course, LT 360 sessions, coaching individuals and teams
- Q2: Coaching individuals and teams
- Q3: LF Recruiting, coaching individuals and teams
- Q4: LT 360 sessions, coaching individuals and teams, program transition to new class

Role of LF Coordinators (LFC)

Serve as “Fellows to the Fellows”



- **Spring ‘10:** Assist in coordinating LF training.
- **Summer ‘10:** Work with GLP to design and implement the Learning Team Retreat.
- **Fall ‘10:** Help deliver MGMT 652 Sim
- **Fall ‘10/Spring ‘11:**
 - Coordinate LF/1st Year Coaching Program
 - Develop and maintain LF Culture
 - Coordinate and manage LF Recruiting
 - Transition to new LF class

Role of LF Coordinators (LFC)



- Program Manager
- Community Developer
- Talent Manager
- Liaison

Role of Cohort Leadership Fellows



- Deliver Learning Team Retreat
- Serve as a Fellow to 4 Learning Teams
 - 20-24 first-year students
- Teaching Assistant for MGMT652
 - Attend class, facilitate 360s, evaluate assignments
- Coach 1st years through their leadership development/team development processes

Role of Cohort Leadership Fellows



- Attend all trainings and return mid-Aug for LT Retreat
- Observe learning teams during MGMT sim and see first-hand a variety of team dynamics
- Facilitate dynamics and relationships that emerge within learning teams
- Help each student realize the importance of developing leadership skills and the role skill development plays in becoming more effective leaders and teammates

All Leadership Fellows are...



- Role models, coaches & mentors and ad hoc advisors.
- Ambassadors of the program to the Wharton community and external audiences.
- Committed and open to personal development, and to developing real and meaningful relationships with students.
- Committed to strengthening and giving back to the Wharton community.
- An integral part of an amazing peer group of fellow LFs



What's in it for You?



- **Leadership Development and Training**
 - Events during Spring 2010 - Training on topics such as:
 - Emotional Intelligence
 - Team Development
 - Coaching Skills
 - Experiential Learning
 - Conflict Mediation

 - Events during Fall 2009 - Spring 2010
 - Learning Team Retreat Training
 - Professional Leadership Coaching
 - Fellows Social Events

sponsored by



What's in it for You?

- **Compensation**

- Salary

- Coordinators: \$3400
- Cohort Fellows: \$2800

- OR Course Credit

- 1 credit unit (Management credit) and \$600

What's in it for You?



- Bonding with an awesome group of your classmates.
- Advanced learning in self awareness, emotional intelligence
- Practice engaging in peer leadership
- Having a chance to leave Wharton a better place than when you found it

But Most of All...

**F
R
I
E
N
D
S**



**&
F
U
N
!!**

Key Steps & Dates

**Applications
Reviewed**

(10-20 November)

**Interviews
& Teach-Ins**

(Friday-Saturday
4-5 December)

**2nd Round
Interviews**

(Monday-Tuesday
25-26 January)

**Applications
Due By 5pm**

Tues NOV 10

**Interview
Invitations
Sent**

Mon NOV 23

**2nd Round
Invitations
Sent**

Mon DEC 7

**Fellows
Announced**

Wed FEB 3

Written Application



1. **Cover Sheet:** Form available on Leadership Program website
2. **Short Essays** (1250 total words max)
3. **Wharton Resume**
4. **Signature Page:** Acknowledgement of commitment
5. **References:** form to be filled out and submitted by 2 peers within Wharton community

Application Guidelines

- Access application through Graduate Leadership Program Website:

<http://leadership.wharton.upenn.edu/mba>

- Recommenders send documents on their own
- **No later than Tuesday NOVEMBER 10 at 5:00pm**

*****LATE SUBMISSIONS WILL NOT BE ACCEPTED*****

Written Application



To apply to be a Leadership Fellow:

- Send 1 email with the following 2 documents attached to lead-fellow@wharton.upenn.edu by the application deadline:
 - “Application Step 1” which includes the application cover page, a copy of your resume (pasted from Word into the application file), and the signature page.
 - “Application Step 2” which includes four essay questions. **DO NOT INCLUDE YOUR NAME IN THIS FILE, ONLY YOUR PENN ID NUMBER.**
- Solicit 2 recommendations. Recommenders should use the recommendation forms provided (“LF Recommendation Form”) and email to lead-fellow@wharton.upenn.edu by the application deadline, with the subject line being your (the candidate’s) name.

For More Information

- Talk to your Leadership Fellows or the Leadership Fellow Coordinators
- Contact Leadership Fellow Coordinators at lead-fellow@wharton.upenn.edu
- Check out...
http://wlp.wharton.upenn.edu/wlp_ver1.3/fellows_overview.htm

Q&A



Email: lead-fellow@wharton.upenn.edu

Deadline: Tuesday NOVEMBER 10 at 5:00pm EST